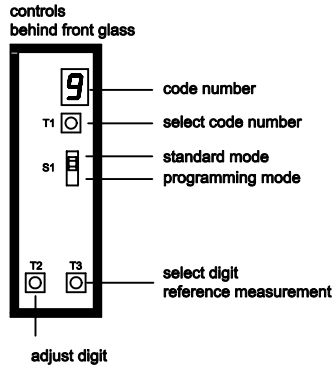
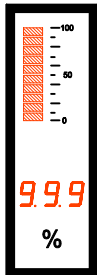


Type: DBA-EA13/A

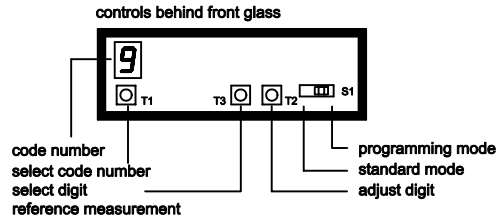
DC current/voltage

case 72 x 24 mm

DBA-EA13/AxxRH



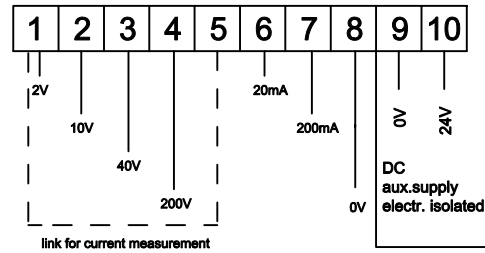
DBA-EA13/xxGQ



programming

code numb	display	description
0	P 0	input min. display value select digit with T3 adjust digit with T2
1	P 1	take-over min. input signal (to be supplied) take-over with T3
2	P 2	input max. display value select digit with T3 adjust digit with T2
3	P 3	take-over max. display value (to be supplied) take-over with T3
4	P 4	average value of 1-99 measurements line-break-indicator with value falling 25% below meas. signal - = no L = yes
5	P 5	half correction of last digit in steps by 2,5,10 0 = no rounding [0] [2] [5] [10]
6	P 6	brightness adjustment (0 ... 9) 0 = bright 9 = dark
	EEP	data will be stored - device changes than back into standard mode

rear connector with screw-type terminals



display messages

EEP	EEProm under programming
----	overflow flashing of segments in the middle
- -	line-break-indication

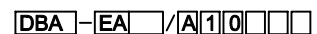
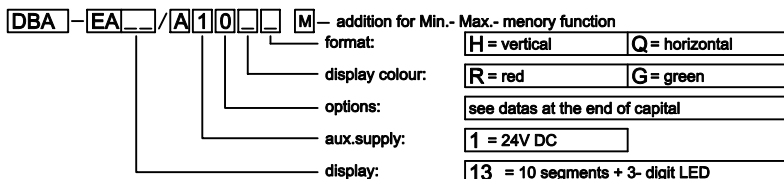
input resistance

terminal	Ri
1	100 kOhm
2	560 kOhm
3	2,2 MOhm
4	10 MOhm
6	100 Ohm
7	10 Ohm

technical data

aux. supply:	18-35V DC
power consumption:	max. 2,5 VA
measuring range voltage:	2V / 10V / 40V / 200V
measuring range current:	20mA / 200mA
display max.:	programmable
display min.:	programmable
conversion rate:	approx. 1 per second
principle of measurement:	Dual-Slope-Integration
error of measurement:	+/- 0,1% of measuring value +/- 1 digit/segment
overflow:	flashing of display segments in the middle
average value:	adjustable of 1-99 measurements

display height:	7 mm	3-digits
resolution:	-99...999	
scale length:	25 mm	10 segments
resolution:	1 segment	
The max. value of scale depends on the programmed display max. value		
panel cutout:	68(+0,7) x 22,2(+0,3) mm	
mount.depth (without plug):	114 mm (102 mm)	
bezel height:	5,5 mm	
option:	Min.-Max.-memory-function	
controls are accessible through the front glass		
recall min. and max. value with T2 and T3		



GS Gebhardt & Schäfer Industrie-Elektronik GmbH

Porschestr. 11
D-51381 Leverkusen
Tel. +49 (0) 21 71 / 73 72 2 -0
Fax +49 (0) 21 71 / 73 72 2 -39
Internet: <http://www.GS-GmbH.de>
E-Mail: info@GS-GmbH.de

Kölner Bank eG
IBAN: DE62 3716 0087 0940 9250 10
BIC: GENODED1CGN
Kreissparkasse Köln
IBAN: DE65 3705 0299 0312 0061 45
BIC: COKSDE33

Deutsche Bank AG
IBAN: DE30 3757 0024 0851 0851 00
BIC: DEUTDE33
Foreign Payments:
Account-No. 851 085 1
S.W.I.F.T. DEUTDEB 375

Geschäftsführer: 2.5
Karlheinz Schäfer
Guido Gebhardt
USt.-Nr. DE 123713297
Amtsgericht Köln, HRB 48860
D-U-N-S@: 340802073